

PI 3 Kinase p85 beta Antibody
Rabbit mAb
Catalog # AP90535**Specification**

PI 3 Kinase p85 beta Antibody - Product Information

Application	WB, IHC, FC, ICC, IP
Primary Accession	O00459
Reactivity	Rat
Clonality	Monoclonal

Other Names

p85; p85 beta; P85B; Phosphatidylinositol 3 kinase; PI3 kinase p85 beta subunit; PI3K; PIK3R 2;

Isotype	Rabbit IgG
Host	Rabbit
Calculated MW	81545 Da

PI 3 Kinase p85 beta Antibody - Additional Information

Dilution	WB~~1:1000 IHC~~1:100~500 FC~~1:10~50 ICC~~N/A IP~~N/A
Purification	Affinity-chromatography
Immunogen	A synthesized peptide derived from human PI 3 Kinase p85 beta
Description	Phosphoinositide 3-kinase (PI3K) catalyzes the production of phosphatidylinositol-3,4,5-triphosphate by phosphorylating phosphatidylinositol (PI), phosphatidylinositol-4-phosphate (PIP) and phosphatidylinositol-4,5-bisphosphate (PIP2). Growth factors and hormones trigger this phosphorylation event, which in turn coordinates cell growth, cell cycle entry, cell migration, and cell survival.
Storage Condition and Buffer	Rabbit IgG in phosphate buffered saline , pH 7.4, 150mM NaCl, 0.02% sodium azide and 50% glycerol. Store at +4°C short term. Store at -20°C long term. Avoid freeze / thaw cycle.

PI 3 Kinase p85 beta Antibody - Protein Information**Name** PIK3R2**Function**

Regulatory subunit of phosphoinositide-3-kinase (PI3K), a kinase that phosphorylates PtdIns(4,5)P2

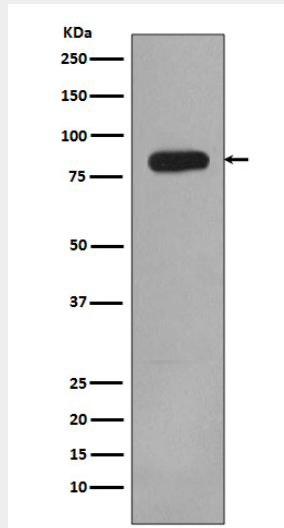
(Phosphatidylinositol 4,5- biphosphate) to generate phosphatidylinositol 3,4,5-trisphosphate (PIP3). PIP3 plays a key role by recruiting PH domain-containing proteins to the membrane, including AKT1 and PDK1, activating signaling cascades involved in cell growth, survival, proliferation, motility and morphology. Binds to activated (phosphorylated) protein- tyrosine kinases, through its SH2 domain, and acts as an adapter, mediating the association of the p110 catalytic unit to the plasma membrane. Indirectly regulates autophagy (PubMed:23604317). Promotes nuclear translocation of XBP1 isoform 2 in a ER stress- and/or insulin- dependent manner during metabolic overloading in the liver and hence plays a role in glucose tolerance improvement (By similarity).

PI 3 Kinase p85 beta Antibody - Protocols

Provided below are standard protocols that you may find useful for product applications.

- [Western Blot](#)
- [Blocking Peptides](#)
- [Dot Blot](#)
- [Immunohistochemistry](#)
- [Immunofluorescence](#)
- [Immunoprecipitation](#)
- [Flow Cytometry](#)
- [Cell Culture](#)

PI 3 Kinase p85 beta Antibody - Images



Western blot analysis of PI 3 Kinase p85 beta expression in HeLa cell lysate.